

Structured Prompting for Teachers of  
English as a New Language/English as  
a Foreign Language  
for  
Everyone Academy – Morocco  
Aziz Soubai  
March 11<sup>th</sup>, 2024



Dr. Jasmin (Bey) Cowin  
Associate Professor, Touro  
University  
Graduate School of  
Education, TESOL/BLE  
U.S. Department of State  
English Language  
Specialist (2024)  
[jasmin.cowin@touro.edu](mailto:jasmin.cowin@touro.edu)

# ZOOM RECORDING – CLICK BELOW TO GET ACCESS

## Zoom recording: Structured Prompting for Teachers of English as a New Language/English as a Foreign Language for Everyone Academy – Morocco (Aziz Soubai)

Passcode: 1t!\$@CuP



The screenshot shows a Zoom meeting interface. At the top, there are two video thumbnails: one for Dr. Jasmin Cowin and one for Aziz Soubai. Below the thumbnails is a slide with the following text:

Structured Prompting for Teachers of  
English as a New Language/English as  
a Foreign Language  
for  
Everyone Academy – Morocco  
Aziz Soubai

Below the slide is the Touro University logo, which consists of a blue shield with a white 'U' and a flame, followed by the text 'TOURO UNIVERSITY'.

On the right side of the slide, there is a participant information box for Dr. Jasmin (Bey) Cowin:

Dr. Jasmin (Bey) Cowin  
Associate Professor, Touro  
University  
Graduate School of  
Education, TESOL/BLE  
U.S. Department of State  
English Language  
Specialist (2024)

At the bottom of the slide, there is a navigation bar with a back arrow, a forward arrow, a search icon, and a page indicator '1 / 10'.

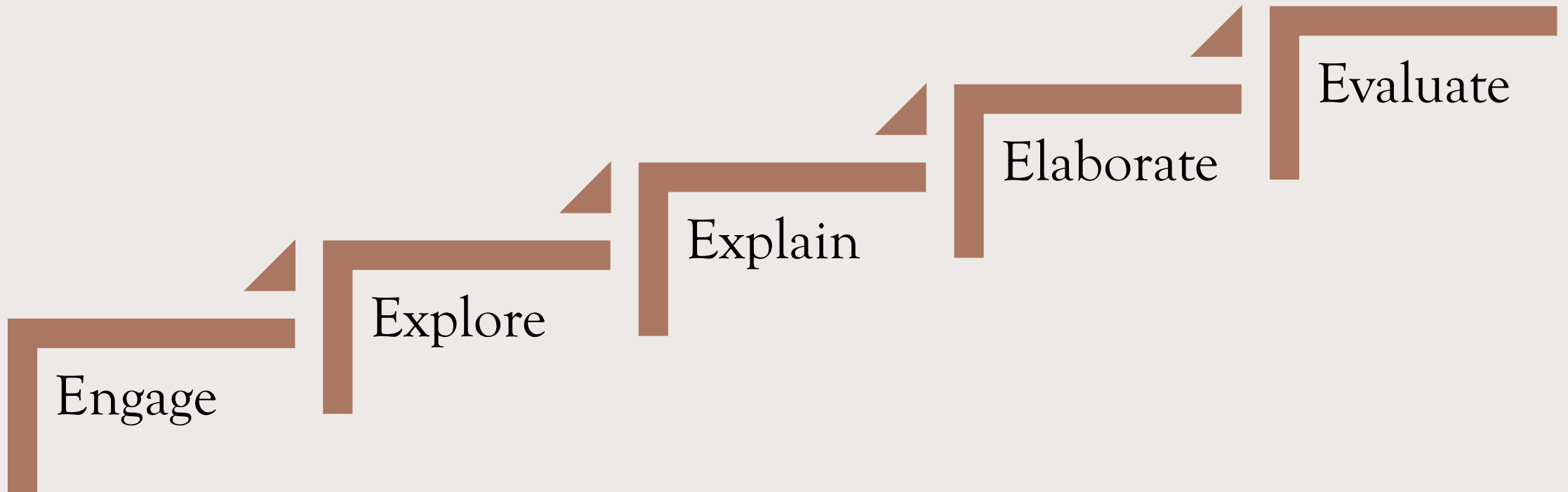
# Speaker Bio

Dr. Jasmin (Bey) Cowin is an Associate Professor at Touro University, Fulbright Scholar, SIT Graduate, U.S. Department of State English Language Specialist (2024) in Assessment and Artificial Intelligence, and former Education Policy Fellow (EPFP™), Columbia University, Teachers College. She regularly writes on 'Insights at the Intersection of AI and Education,' for Stankevicius Media. Aligned with the UN's Sustainable Development Goal 4, she has contributed to initiatives like Computers for Schools Burundi, TESOL "Train the Trainer" programs in Yemen and Morocco. Her research explores simulations for educators-in-training, AI in education and assessment, Metaverses applications, and educational transformation for language educators.

[Dr. J's Education Blog: Exploration in Education](#)

This online presentation will showcase strategies for utilizing various AI platforms such as ChatGPT, Bard, and others to craft personalized language learning environments, targeted teaching resources, and evaluative tools such as rubrics. Participants will explore how to use a detailed plan to effectively integrate AI tools into language teaching and learning. The framework includes theoretical underpinnings, practical steps, examples of AI prompts tailored for different language skills, production and proficiency levels, strategies for assessing learners' progress, and ways to adapt AI resources for personalized educational contexts. Participants will also receive a resource infographic.

# 5 E Lesson Plan



<b>Phase</b>	<b>Description 5 E Lesson Plan</b>
<b>Engage</b>	<b>The teacher or a curriculum task accesses the learners' prior knowledge and helps them become engaged in a new concept through the use of short activities that promote curiosity and elicit prior knowledge. The activity should make connections between past and present learning experiences, expose prior conceptions, and organize students' thinking toward the learning outcomes of current activities</b>
<b>Explore</b>	<b>Exploration experiences provide students with a common base of activities within which current concepts (i.e., alternative conceptions), processes, and skills are identified and conceptual change is facilitated. Learners may complete lab activities that help them use prior knowledge to generate new ideas, explore questions and possibilities, and design and conduct a preliminary investigation</b>
<b>Explain</b>	<b>The explanation phase focuses students' attention on a particular aspect of their engagement and exploration experiences and provides opportunities to demonstrate their conceptual understanding, process skills, or behaviors. This phase also provides opportunities for teachers to directly introduce a concept, process, or skill. Learners explain their understanding of the concept. An explanation from the teacher or the curriculum may guide them toward a deeper understanding, which is a critical part of this phase</b>
<b>Elaborate</b>	<b>Teachers challenge and extend students' conceptual understanding and skills. Through new experiences, the students develop deeper and broader understanding, more information, and adequate skills. Students apply their understanding of the concept by conducting additional activities</b>
<b>Evaluate</b>	<b>The evaluation phase encourages students to assess their understanding and abilities and provides opportunities for teachers to evaluate student progress toward achieving the educational objectives</b>

## 5E Lesson Plan Prompt Example

You are an expert [grade and subject] teacher. Design a lesson plan for our unit on [subject] based on the 5E instructional model, which has students Engage, Explore, Explain, Elaborate, and Evaluate. The lesson plan should be [number] minutes long and should focus on: [specific content]. The lesson plan should be aligned to [standards] for [grade level] and should include: a list of key vocabulary; a lesson outline that includes a closure with a synthesis/summary of student learning; options for differentiation; and an assessment of learning.

# ENL Lesson Plan

---

## Generic:

Create a lesson plan template grade 6 that includes objectives, materials, vocabulary, activities, and assessment.

## Detailed:

As an ENL teacher, teaching [grade], develop a 45-minute lesson plan for intermediate ESL students focusing on [grammar focus]. Include a warm-up activity, [type of grammar explanation], [type of controlled practice activity], [type of free practice activity], and a [type of closing assessment].



# Cloze Sheets and Crossword Puzzles

---

## Generic:

Generate a cloze sheet or crossword puzzle using vocabulary from a specific theme or reading passage

## Detailed Prompt:

As an EFL teacher for [grade], Construct a cloze activity based on a [short narrative or text ] about [topic] focusing on [cultural festival or event]. The text should be approximately [word count] words long and appropriate for the student's language level.

Ensure that [number of missing words] missing words target the use of [specific grammar point].

Following that, create a crossword puzzle using [number of vocabulary words] vocabulary words from the same narrative. Provide [clue type, e.g., definitions or synonyms] as clues for each word. The puzzle grid should be [grid size, e.g., 10x10] squares."

# Grammar Exercises

---

Generic Prompt: "Compose exercises to practice past tense English grammar."

Detailed Prompt:

As an ENL teacher for [grade], Write a series of exercises that guide students through the identification and use of [relative clauses]. Begin with [sentence combining tasks], progress to [sentence correction], and conclude with a creative writing prompt where students must include at least [five] sentences with [relative clauses].

Align and list [state standards].

# Rubrics

---

Generic: Develop a rubric template for assessing an essay about travel for 5<sup>th</sup> grade.

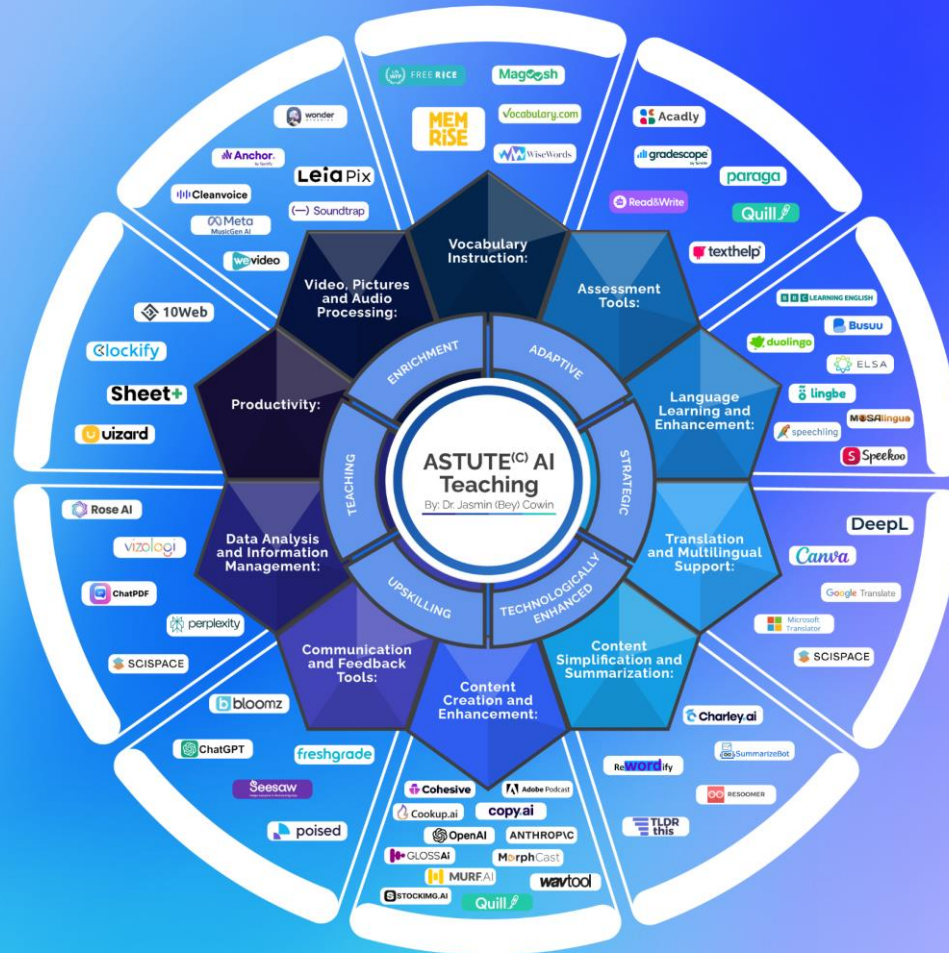
Detailed: As an ENL/EFL teacher for [grade], Create a HEDI rubric for evaluating a [name and assignment description] with a total of [total points] points possible.

Include these criteria: [ example only: content, organization, vocabulary, grammar, and delivery]

For each criterion, provide descriptors for [number] performance levels.

# The Educator's AI Toolkit: ASTUTE<sup>(c)</sup> AI Teaching

CREATED BY  
Jasmin (Bey) Cowin, Ed.D.



Structured Prompting for Teachers of  
English as a New Language/English as  
a Foreign Language  
for  
Everyone Academy – Morocco  
Aziz Soubai  
March 11<sup>th</sup>, 2024



Dr. Jasmin (Bey) Cowin  
Associate Professor, Touro  
University  
Graduate School of  
Education, TESOL/BLE  
U.S. Department of State  
English Language  
Specialist (2024)  
[jasmin.cowin@touro.edu](mailto:jasmin.cowin@touro.edu)